

# Ka Lau

May 2, 2018

2017/2018, Issue 14



## LCPCS Musicians Rock the Laupāhoehoe Music Festival



A little rain didn't dampen the spirits of the 25 or so LCPCS-ers who took the stage during the recent 13<sup>th</sup> annual Laupāhoehoe Music Festival. That number was up from 11 last year, due to an increase in music offerings at LCPCS in 2017/2018.

Like last year, music teacher Todd Otake offered an after-school music class to middle and high school students. In addition, high school students this year had the choice of two different elective music classes throughout the year, and middle school students could choose a music elective during the second semester. (Mr. Otake also taught an after-school class for elementary students from November to March.)

The result was a lot of kids on the stage! In addition to playing, quite a few of the students chose to sing. According to Mr. Otake, a bunch of the kids wanted to try it, so "we let 'em go!"

Mr. Otake hopes these kids will want to add to their skills next year, and he plans to beef up the ensemble class with additional instruments, like guitar and drums. In the meantime, kudos to those kids for getting up there in front of the crowd! That takes guts!



## Career Day Highlights Possibilities



*Senior Noelle Oscarson speaks with retired NASA employee Michael Hester.*

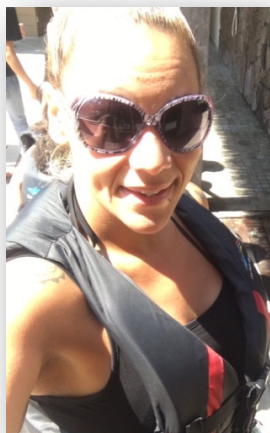
On Friday, April 20, LCPCS hosted a career day for all secondary students. Thirty professionals from a wide range of occupations came to the school to share their experiences, their perspectives, and their advice. LCPCS College and Career Coordinator Tara Whitford arranged the speakers into nine panels of roughly three speakers each, which rotated through the classrooms. Because there were so many speakers, not every class got to see every speaker in the smaller, classroom venue, so at the end of the day, all the speakers and students met in the gym. Each of the guests gave a short synopsis, and then the students were allowed to network with their new contacts.



*Eleot Kaipo, a plumber, addresses a mix of middle and high school students.*

The various careers represented included public service, counseling, academic/teaching, electrical system installation, environmental management/National Park Service, business, bioenergy, plumbing, agroforestry, speech/language pathology, program management, marine biology, administration and photography. LCPCS extends a warm mahalo to all the volunteers who took the time to share their 'ike with our students.

## Seasider Spotlight



*Ms. Parel geared up on a Sea Quest trip to the Hilton with the first-graders earlier this year.*

Tiffany Parel is an EA who works primarily with the first grade, and drives the van when needed. But that's not all. Ms. Parel also works full time as a nurse at the Life Care Center in Kailua-Kona. She regularly pulls double shifts there, and when interviewed for this Spotlight, she had gotten off work in Kona at 6:00 am, and come directly to school to start her day with the busy little first-graders. Somehow, she manages to work three days a week at LCPCS, and has done so for almost three years! "I love it," she said of her work at the school. "I get to see everybody grow up."

And no, Ms. Parel does not get much time to relax in the small amount of time she's at home! She has four children of her own; two are currently enrolled at LCPCS, one graduated from LCPCS last year, and one starts pre-school next year. Ms. Parel was born and raised in Laupāhoehoe, and says she came to the school hoping to "give back to the community." First grade teacher Crystal Ivey says that "Tiffany is a huge asset for our classroom, definitely." A huge asset for the whole school, it sounds like!